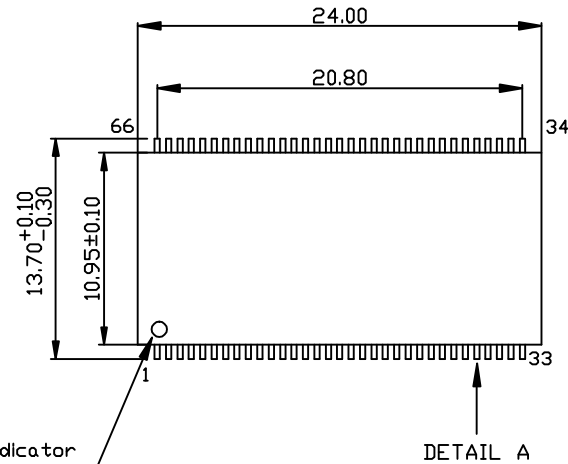
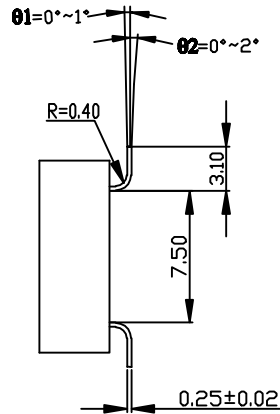
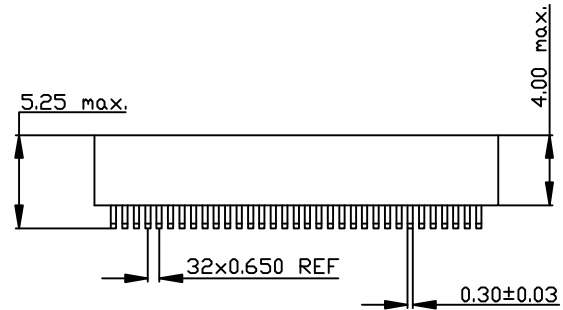


DETAIL A



Pin 1 Indicator

DETAIL A

NOTE: Dimensions in Millimeters
PACKAGE Y2 = 2 LEVEL
CONNECTIC = TSOP (66PIN)
PITCH = 0.65

COTES en millimètres (DIMENSIONS in millimeters)		TOLERANCES GENERALES (GENERAL TOLERANCE)		MODIFICATIONS			
Testable in Socket : ENPLAS OTS-66.065.11a Modified by 3D PLUS		±0.20mm Unless Otherwise Specified		First issue	04/12/07	RB	1
Leads Coplanarity : 0.15mm		DESSINE PAR (DRAWN BY)	NOM (NAME) R. BOGAGE	DATE 04/12/2007			
MATIERE BROCHES (LEADS MATERIAL)	KOVAR Tickness : 250µm±20µm En respectant le sens de laminage	VERIFIE PAR (CHECKED BY)	NOM (NAME)	DATE			
FINITION BROCHES (LEADS FINITION)	Ni electrolytique (205µm) + Au electrolytique (1.27 Typ. - Soit 182µm)	APPROUVE PAR (APPROVED BY)	NOM (NAME)	DATE			
		ECHELLE (SCALE) NONE		FORMAT (SIZE) A3	Mechanical Drawing Module SOP 66-065 - Package Y2		PLANCHE (SHEET) 1/1

3Dplus D

LESTAT
 Fonction :
 P.C.B :
 Document : 3200-2411